

# How a Loss of Scientific Integrity is Addressed at HHS

Step  
1



## Report of a potential loss

Concerns about a potential loss of scientific integrity may be reported by any individual who has knowledge of the situation.

If you are unsure about whether the situation is a violation of scientific integrity, you can seek an informal consultation with the Scientific Integrity Official (SIO).



Step  
2



## Initial situation assessment by SIO

When a formal complaint is filed, the SIO conducts an initial assessment and gathers additional information about the complaint.

If the SIO determines that there is a potential loss of scientific integrity, they will open a formal investigation.



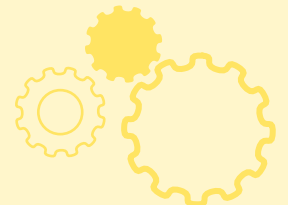
Step  
3



## Formal investigation by members of the Scientific Integrity Council

If a formal investigation is opened, a subcommittee of the Scientific Integrity Council explores the allegations, including interviewing witnesses and reviewing documentation.

Once the investigation is completed, the subcommittee writes a formal report and submits it to the SIO, who will determine whether scientific integrity was compromised.



Step  
4



## Recommended corrective actions, if needed

If a determination is made that scientific integrity was compromised, the SIO will recommend what corrective actions should be taken, such as issuing a correction to the scientific record.

Depending on the nature of the potential loss reported, the SIO may refer your concern to another part of HHS. **Visit the HHS scientific integrity website for more information:** <https://www.hhs.gov/programs/research/scientificintegrity>

Federal laws protect whistleblowers from retaliation.

For more information, contact: [Whistleblower.Coordinator@oig.hhs.gov](mailto:Whistleblower.Coordinator@oig.hhs.gov)

