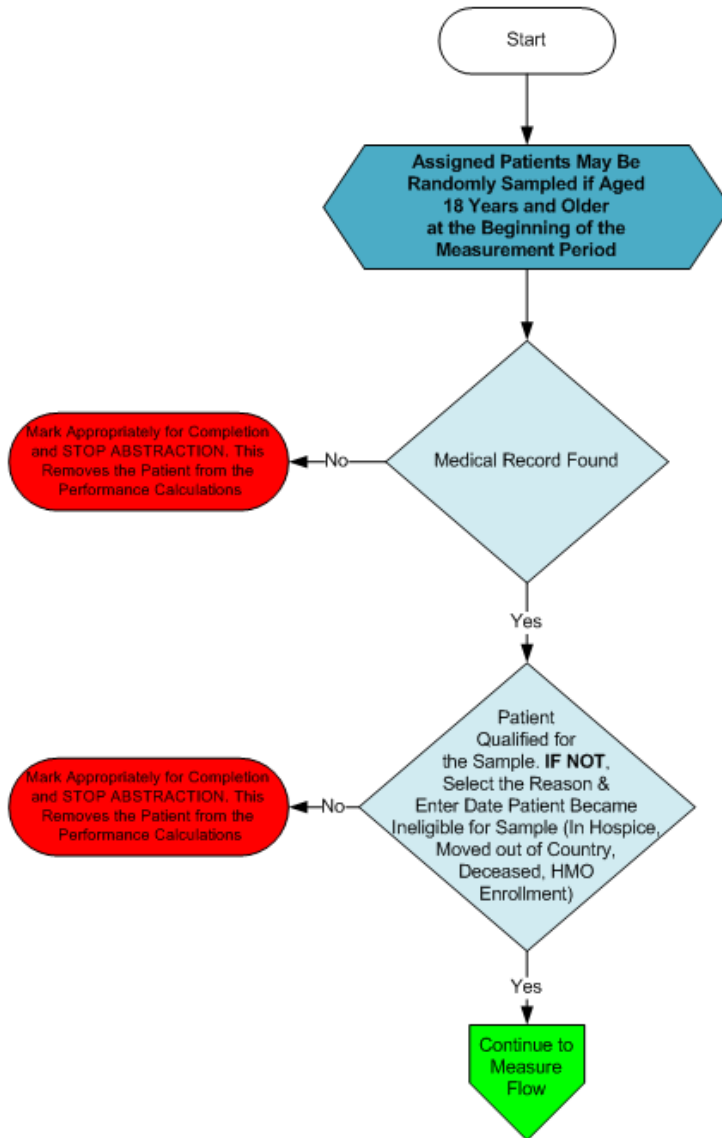


Patient Confirmation Flow for CAD

For 2013, confirmation of the "Medical Record Found", or indicating the patient is "Not Qualified for Sample" with a reason of "In Hospice", "Moved out of Country", "Deceased", or "HMO Enrollment", will only need to be done **once** per patient. For module or measure specific reasons a patient is "Not Confirmed" or excluded for "Other CMS Approved Reason", please refer to the associated Data Guidance.

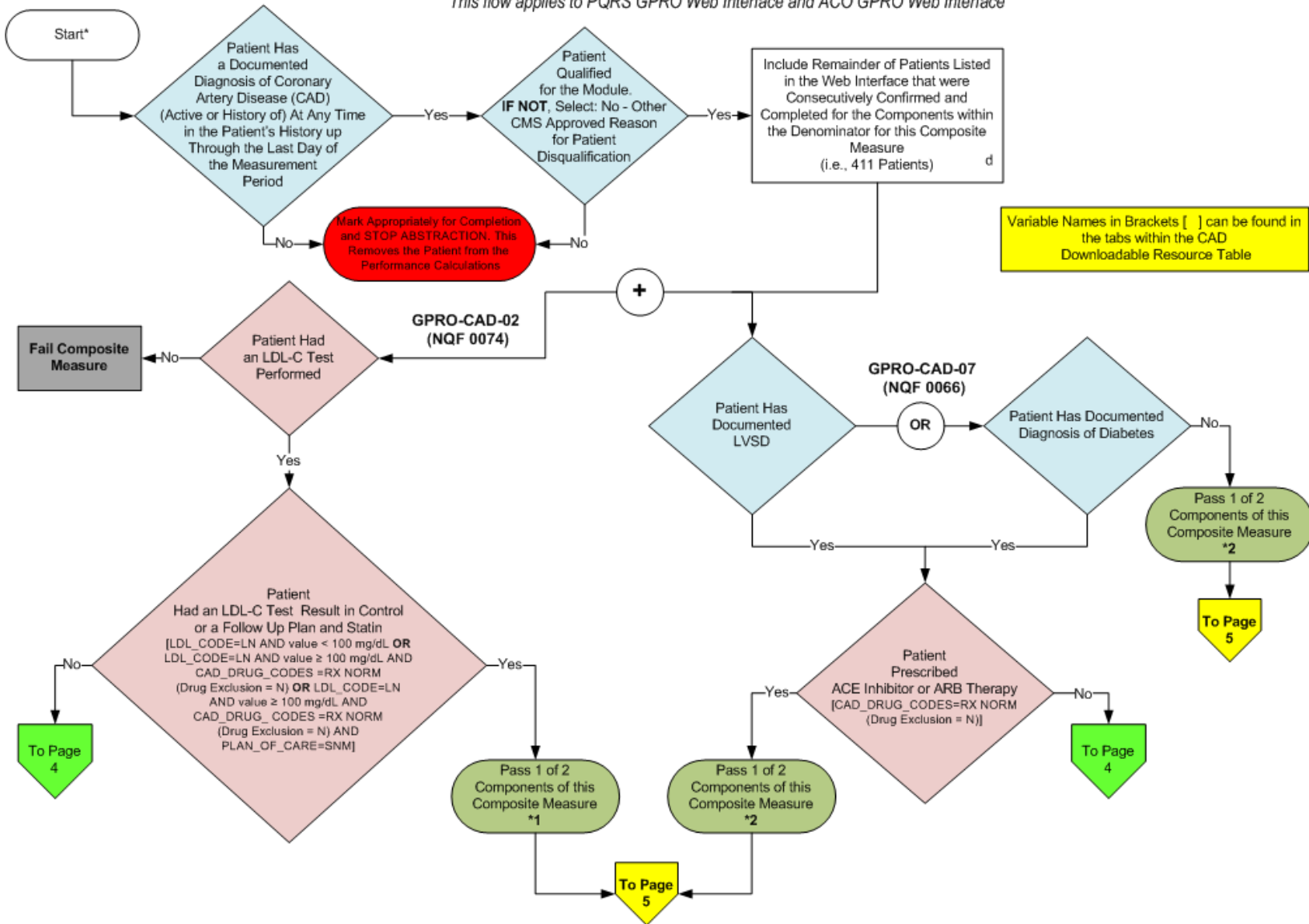


Patient Confirmation Flow for CAD

For 2013, confirmation of the “Medical Record Found”, or indicating the patient is “Not Qualified for Sample” with a reason of “In Hospice”, “Moved out of Country”, “Deceased”, or “HMO Enrollment”, will only need to be done **once** per patient. For module or measure specific reasons a patient is “Not Confirmed” or excluded for “Other CMS Approved Reason”, please refer to the associated Data Guidance.

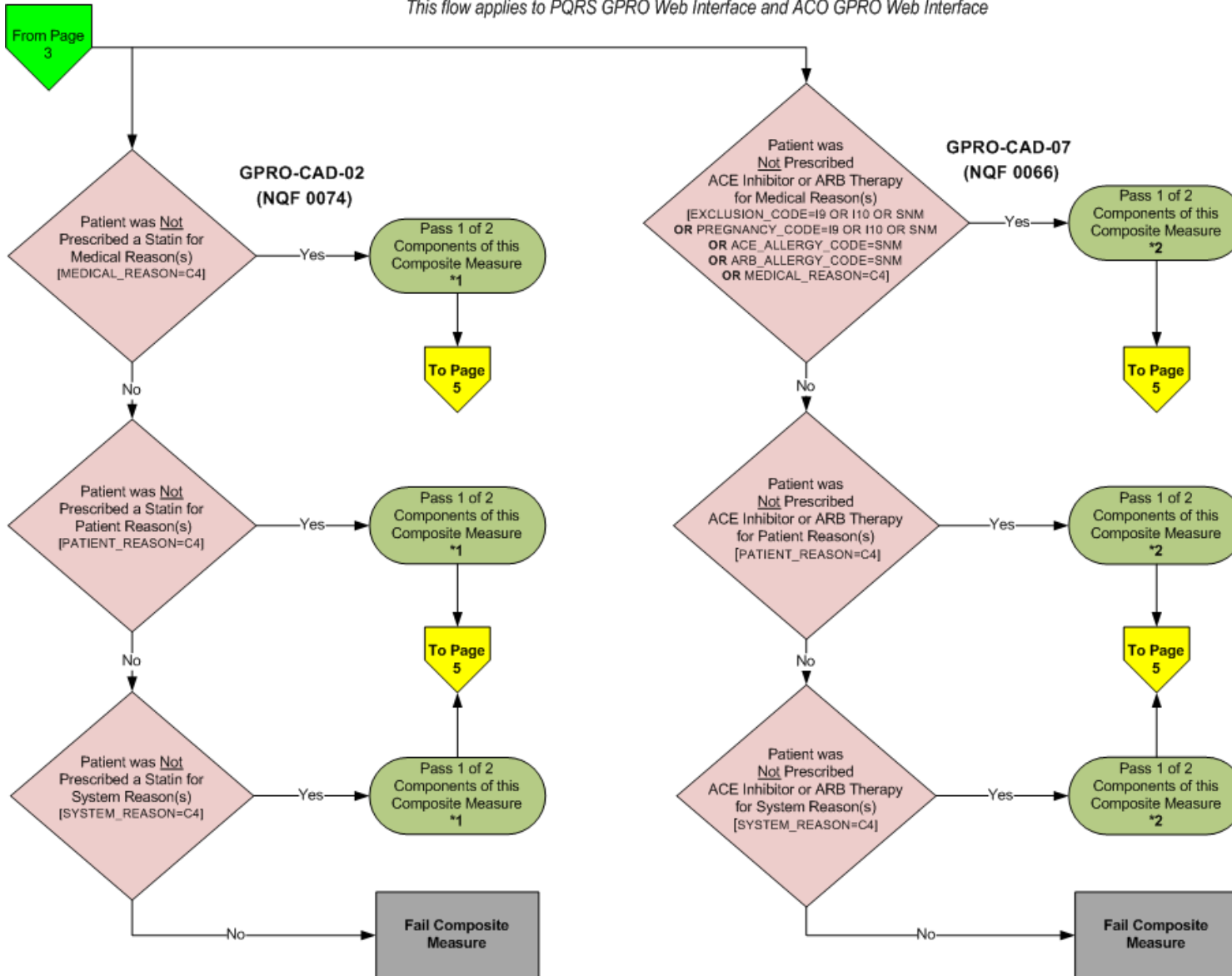
1. Start CAD Patient Confirmation Flow. Assigned patients may be randomly sampled if aged 18 years and older at the beginning of the measurement period.
2. Check to determine if Medical Record can be found
 - a. If no, Medical Record not found, mark appropriately for completion and stop abstraction. This removes the patient from the performance calculations. Stop processing.
 - b. If yes, Medical Record found, continue processing.
3. Check to determine if Patient Qualified for the sample
 - a. If no, the patient does not qualify for the sample, select the reason why and enter the date the patient became ineligible for sample. For example; In Hospice, Moved out of Country, Deceased, HMO Enrollment. Mark appropriately for completion and stop abstraction. This removes the patient from the performance calculations. Stop processing.
 - b. If yes, the patient does qualify for the sample; continue to the 2013 GPRO-CAD measure flows.

2013 GPRO CAD-Composite (NQF 0074 AND NQF 0066): Coronary Artery Disease (CAD): Composite
 This flow applies to PQRS GPRO Web Interface and ACO GPRO Web Interface



*See Data Guidance for further instructions to report this measure

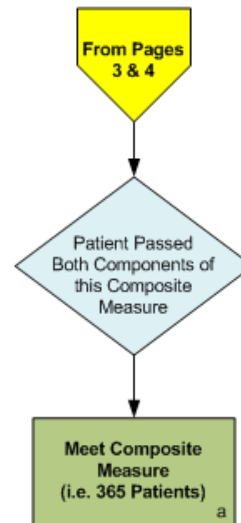
2013 GPRO CAD-Composite (NQF 0074 AND NQF 0066): Coronary Artery Disease (CAD) Composite
 This flow applies to PQRS GPRO Web Interface and ACO GPRO Web Interface



*See Data Guidance for further instructions to report this measure

v1.2

2013 GPRO CAD-Composite (NQF 0074 AND NQF 0066): Coronary Artery Disease (CAD): Composite
This flow applies to PQRS GPRO Web Interface and ACO GPRO Web Interface



SAMPLE CALCULATION: (Composite)

Performance Rate=

$$\frac{\text{Performance Met (a = 365 Patients)}}{\text{Eligible Denominator (d = 411 Patients)}} = \frac{365 \text{ Patients}}{411 \text{ Patients}} = 88.81\%$$

CALCULATIONS MAY CHANGE PENDING PERFORMANCES MET ABOVE

*See Data Guidance for further instructions to report this measure

2013 GPRO CAD-Composite (NQF 0074 AND NQF 0066): Coronary Artery Disease (CAD): Composite

This flow applies to PQRS GPRO Web Interface and ACO GPRO Web Interface

Variable names can be found in the tabs within the CAD Downloadable Resource Table.

See Data Guidance for further instructions to report this measure.

1. Start processing 2013 GPRO CAD-Composite (NQF 0074 and NQF 0066) Flow for the patients that qualified for sample in the CAD Patient Confirmation Flow.
2. Check to determine if the patient has a documented diagnosis of Coronary Artery Disease (CAD) (active or history of) at any time in the patient's history up through the last day of the measurement period.
 - a. If no, the patient does not have a documented diagnosis of Coronary Artery Disease (CAD) (active or history of) at any time in the patient's history up through the last day of the measurement period, mark appropriately for completion and stop abstraction. This removes the patient from the performance calculations. Stop processing.
 - b. If yes, the patient does have a documented diagnosis of Coronary Artery Disease (CAD) (active or history of) at any time in the patient's history up through the last day of the measurement period, continue processing.
3. Check to determine if the patient qualifies for the module.
 - a. If no, the patient did not qualify for the module select: No – Other CMS Approved Reason for patient disqualification. Mark appropriately for completion and stop abstraction. This removes the patient from the performance calculations. Stop processing.
 - b. If yes, the patient does qualify for the module, the patient will be included in the eligible denominator for performance rate calculations. Note: Include remainder of patients listed in the Web Interface that were consecutively confirmed and completed for the components within the denominator for this composite measure. For the sample performance rate calculation in the flow these patients would fall into the 'd' category (eligible denominator, i.e. 411 patients). Continue processing.
4. Check to determine if the patient had an LDL-C test performed (GPRO-CAD-02).
 - a. If no, the patient did not have an LDL-C test performed, the patient fails the composite measure. Stop processing composite measure.
 - b. If yes, the patient did have an LDL-C test performed, continue processing and proceed to step 5.
5. Check to determine if the patient had an LDL-C test result in control or a follow up plan and statin (GPRO-CAD-02). Variable Names: LDL_CODE=LN AND value < 100 mg/dL **OR** LDL_CODE=LN AND value ≥ 100 mg/dL AND CAD_DRUG_CODES=RXNORM (drug exclusion=N) **OR** LDL_CODE=LN AND value ≥ 100 mg/dL AND CAD_DRUG_CODES=RXNORM (drug exclusion=N) AND PLAN_OF_CARE=SNM.
 - a. If no, the patient did not have an LDL-C test result in control or a follow up plan and statin, continue processing and proceed to step 6.
 - b. If yes, the patient did have an LDL-C test result in control or a follow up plan and statin, the patient passes 1 of 2 components of the CAD composite measure. Proceed to step 14 for GPRO-CAD-02. Continue processing for GPRO-CAD-07 and proceed to step 9.

6. Check to determine if the patient was Not prescribed a statin for medical reason(s) (GPRO-CAD-02). Variable Names: MEDICAL_REASON=C4.
 - a. If no, the patient was Not prescribed a statin for medical reason(s), continue processing and proceed to step 7.
 - b. If yes, the patient was Not prescribed a statin for medical reason(s), the patient passes 1 of 2 components of the CAD composite measure. Proceed to step 14 for GPRO-CAD-02. Continue processing for GPRO-CAD-07 and proceed to step 9.

7. Check to determine if the patient was Not prescribed a statin for patient reason(s). Variable Names: PATIENT_REASON=C4.
 - a. If no, the patient was Not prescribed a statin for patient reason(s), continue processing and proceed to step 8.
 - b. If yes, the patient was Not prescribed a statin for patient reasons(s), the patient passes 1 of 2 components of the CAD composite measure. Proceed to step 14 for GPRO-CAD-02. Continue processing for GPRO-CAD-07 and proceed to step 9.

8. Check to determine if the patient was Not prescribed a statin for system reason(s). Variable Names: SYSTEM_REASON=C4.
 - a. If no, the patient was Not prescribed a statin for system reason(s), the patient fails the composite measure, stop processing.
 - b. If yes, the patient was Not prescribed a statin for system reason(s), the patient passes 1 of 2 components of the CAD composite measure. Proceed to step 14 for GPRO-CAD-02. Continue processing for GPRO-CAD-07 and proceed to step 9.

9. Check to determine if the patient has documented LVSD or has documented diagnosis of diabetes (GPRO-CAD-07).
 - a. If no, the patient did not have documented LVSD or documented diagnosis of diabetes, the patient passes 1 of 2 components of the CAD composite measure. Proceed to step 14.
 - b. If yes, the patient did have documented LVSD or documented diagnosis of diabetes, continue processing and proceed to step 10.

10. Check to determine if the patient was prescribed ACE Inhibitor or ARB Therapy. Variable Names: CAD_DRUG_CODE=RXNORM (drug exclusion=N).
 - a. If no, the patient was not prescribed ACE Inhibitor or ARB Therapy, continue processing and proceed to step 11.
 - b. If yes, the patient was prescribed ACE Inhibitor or ARB Therapy, the patient passes 1 of 2 components of the CAD composite measure. Continue processing and proceed to step 14.

11. Check to determine if the patient was Not prescribed ACE Inhibitor or ARB Therapy for medical reason(s) (GPRO-CAD-07). Variable Names: EXCLUSION_CODE=I9 OR I10 OR SNM **OR** PREGNANCY_CODE=I9 OR I10 OR SNM **OR** ACE_ALLERGY_CODE=SNM **OR** ARB_ALLERGY_CODE=SNM **OR** MEDICAL_REASON=C4.
 - a. If no, the patient was Not prescribed ACE Inhibitor or ARB Therapy for medical reason(s), continue processing and proceed to step 12.

- b. If yes, the patient was Not prescribed ACE Inhibitor or ARB Therapy for medical reason(s), the patient passes 1 of 2 components of the CAD composite measure. Continue processing and proceed to step 14.
12. Check to determine if the patient was Not prescribed ACE Inhibitor or ARB Therapy for patient reason(s).
Variable Names: PATIENT_REASON=C4.
- a. If no, the patient was Not prescribed ACE Inhibitor or ARB Therapy for patient reason(s), continue processing and proceed to step 13.
 - b. If yes, the patient was Not prescribed ACE Inhibitor or ARB Therapy for patient reason(s), the patient passes 1 of 2 components of the CAD composite measure. Continue processing and proceed to step 14.
13. Check to determine if the patient was Not prescribed ACE Inhibitor or ARB Therapy for system reason(s).
Variable Names: SYSTEM_REASON=C4.
- a. If no, the patient was Not prescribed ACE Inhibitor or ARB Therapy for system reason(s), the patient fails the composite measure. Stop processing.
 - b. If yes, the patient was Not prescribed ACE Inhibitor or ARB Therapy for system reason(s), the patient passes 1 of 2 components of the CAD composite measure. Continue processing and proceed to step 14.
14. Determine if the patient passed both GPRO-CAD-02 and GPRO-CAD-07 components of the composite measure. If the patient passed both components, the patient meets the composite measure. For the sample performance rate calculation in the flow these patients would fall into the 'a' category (numerator, i.e. 365 patients).

Sample Calculation

Performance Rate Equals

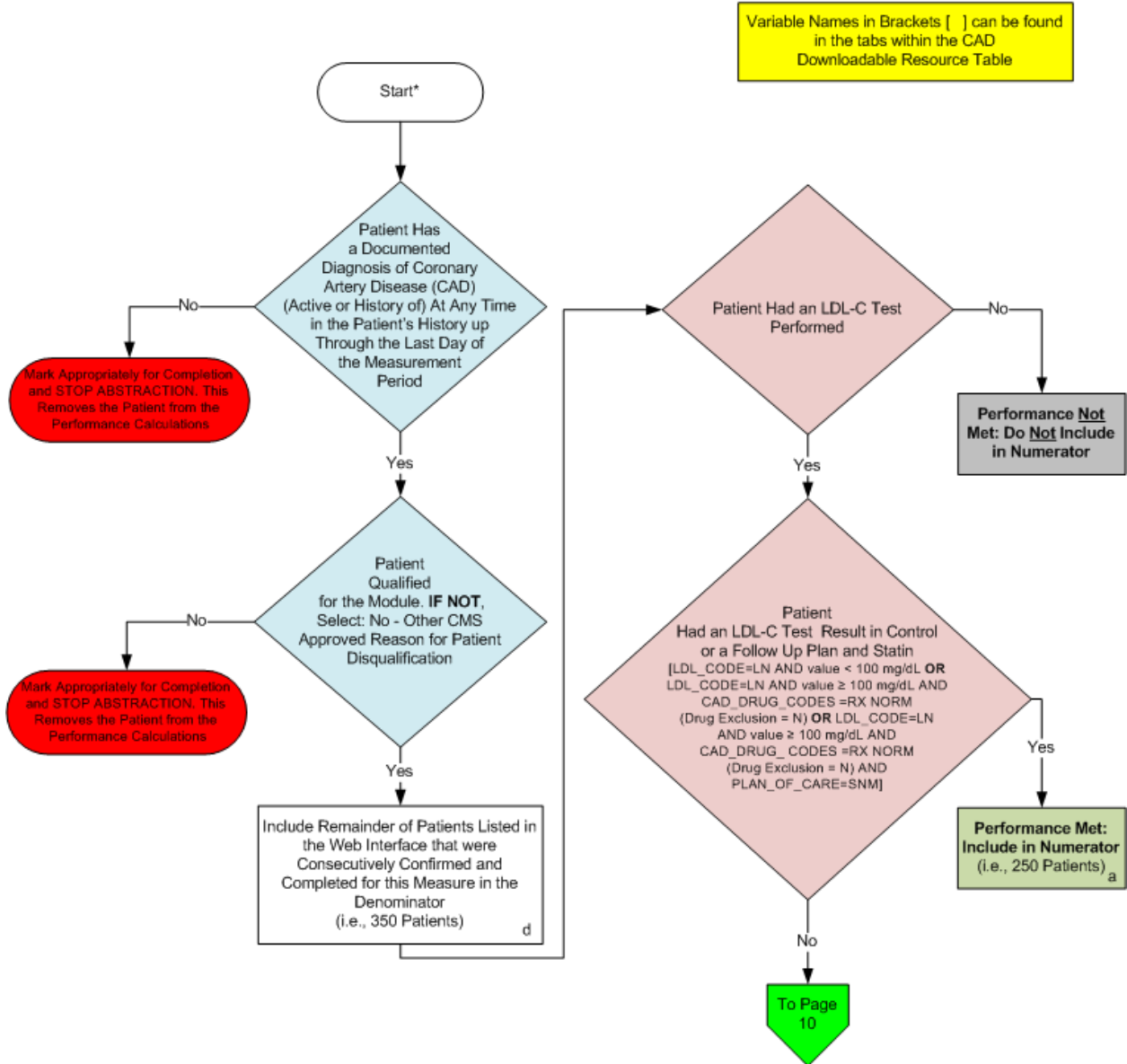
Performance Met is category 'a' in the measure flow (365 patients)

Eligible Denominator is category 'd' in measure flow (411 patients)

365 (Performance Met) divided by 411 (Eligible Denominator) equals a performance rate of 88.81 percent

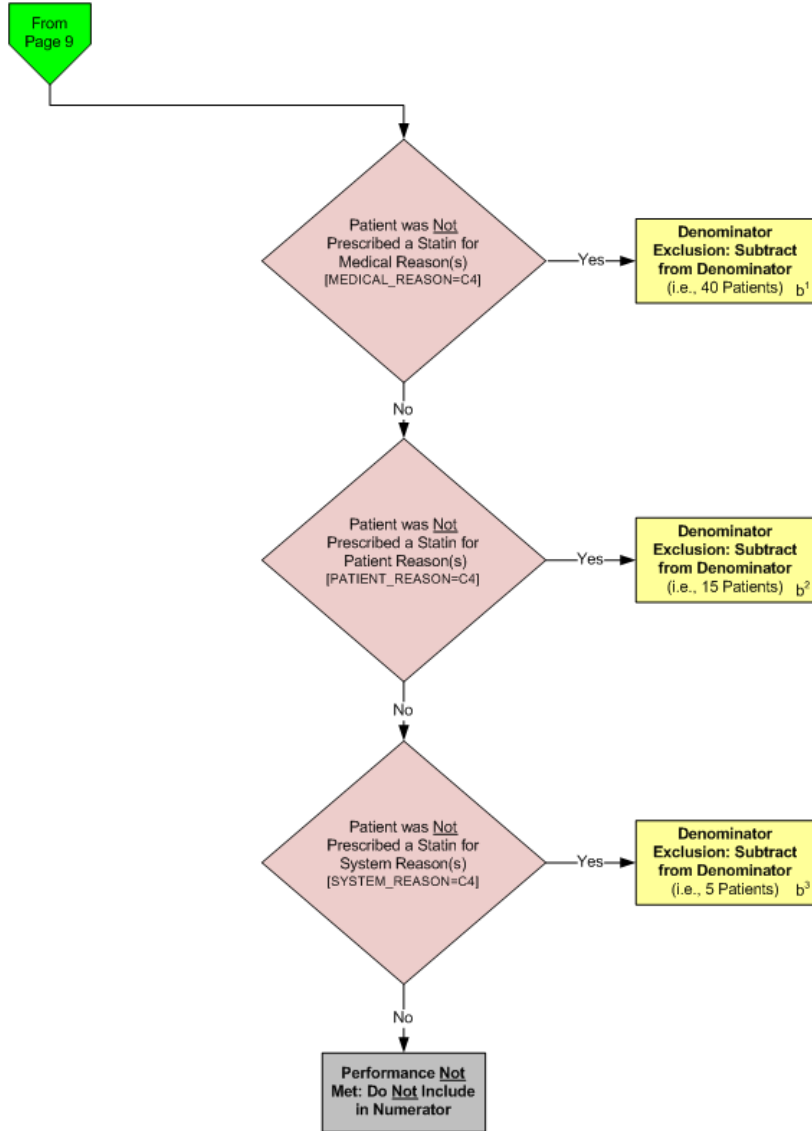
Calculation May Change Pending Performance Met

2013 GPRO-CAD-2 (NQF 0074): Coronary Artery Disease (CAD): Lipid Control
 This flow applies to PQRS GPRO Web Interface and ACO GPRO Web Interface



*See Data Guidance for further instructions to report this measure

2013 GPRO-CAD-2 (NQF 0074): Coronary Artery Disease (CAD): Lipid Control
 This flow applies to PQRS GPRO Web Interface and ACO GPRO Web Interface



SAMPLE CALCULATION:

Performance Rate=
 Performance Met (a = 250 Patients) / Eligible Denominator (d=350 Patients) - Denominator Exclusion (b¹=40 + b²=15 + b³= 5 Patients) = 250 Patients / 290 Patients = 86.21%

CALCULATION MAY CHANGE PENDING PERFORMANCE MET ABOVE

*See Data Guidance for further instructions to report this measure

2013 GPRO-CAD-2 (NQF 0074): Coronary Artery Disease (CAD): Lipid Control

This flow applies to PQRS GPRO Web Interface and ACO GPRO Web Interface

Variable names can be found in the tabs within the CAD Downloadable Resource Table.

See Data Guidance for further instructions to report this measure.

1. Start processing 2013 GPRO CAD-2 (NQF 0074) Flow for the patients that qualified for sample in the CAD Patient Confirmation Flow.
2. Check to determine if patient has a documented diagnosis of Coronary Artery Disease (CAD) (active or history of) at any time in the patient's history up through the last day of the measurement period.
 - a. If no, the patient does not have a documented diagnosis of Coronary Artery Disease (CAD) (active or history of) at any time in the patient's history up through the last day of the measurement period, mark appropriately for completion and stop abstraction. This removes the patient from the performance calculations. Stop processing.
 - b. If yes, the patient does have a documented diagnosis of Coronary Artery Disease (CAD) (active or history of) at any time in the patient's history up through the last day of the measurement period, continue processing.
3. Check to determine if the patient qualifies for the module.
 - a. If no, the patient did not qualify for the module select: No – Other CMS Approved Reason for patient disqualification. Mark appropriately for completion and stop abstraction. This removes the patient from the performance calculations. Stop processing.
 - b. If yes, the patient does qualify for the module, the patient will be included in the eligible denominator for performance rate calculations. Note: Include remainder of patients listed in the Web Interface that were consecutively confirmed and completed for this measure in the denominator. For the sample performance rate calculation in the flow these patients would fall into the 'd' category (eligible denominator, i.e. 350 patients). Continue processing.
4. Check to determine if the patient had an LDL-C test performed (GPRO-CAD-2).
 - a. If no, the patient did not have an LDL-C test performed, performance is not met and should not be included in the numerator. Stop processing.
 - b. If yes, the patient did have an LDL-C test performed, continue processing.
5. Check to determine if the patient had an LDL-C test result in control or a follow up plan and statin.
Variable Names: LDL_CODE=LN AND value < 100 mg/dL **OR** LDL_CODE=LN AND value ≥ 100 mg/dL AND CAD_DRUG_CODES=RXNORM (drug exclusion=N) **OR** LDL_CODE=LN AND value ≥ 100 mg/dL AND CAD_DRUG_CODES=RXNORM (drug exclusion=N) AND PLAN_OF_CARE=SNM.
 - a. If no, the patient did not have an LDL-C test result in control or a follow up plan and statin, continue processing.
 - b. If yes, the patient did have an LDL-C test result in control or a follow up plan and statin, performance is met and the patient will be included in the numerator. For the sample performance rate calculation in the flow these patients would fall into the 'a' category (numerator, i.e. 250 patients). Stop processing.

6. Check to determine if the patient was Not prescribed a statin for medical reason(s). Variable Names: MEDICAL_REASON=C4.
 - a. If no, the patient was Not prescribed a statin for medical reason(s), continue processing.
 - b. If yes, the patient was Not prescribed a statin for medical reason(s), this is a denominator exclusion and the case should be subtracted from the eligible denominator. For the sample performance rate calculation in the flow these patients would fall into the 'b' category (denominator exclusion, i.e. 40 patients). Stop processing.

7. Check to determine if the patient was Not prescribed a statin for patient reason(s). Variable Names: PATIENT_REASON=C4.
 - a. If no, the patient was Not prescribed a statin for patient reason(s), continue processing.
 - b. If yes, the patient was Not prescribed a statin for patient reason(s), this is a denominator exclusion and the case should be subtracted from the eligible denominator. For the sample performance rate calculation in the flow these patients would fall into the 'b' category (denominator exclusion, i.e. 15 patients). Stop processing.

8. Check to determine if the patient was Not prescribed a statin for system reason(s). Variable Names: SYSTEM_REASON=C4.
 - a. If no, the patient was Not prescribed a statin for system reason(s), performance is not met and should not be included in the numerator. Stop processing.
 - b. If yes, the patient was Not prescribed a statin for system reason(s), this is a denominator exclusion and the case should be subtracted from the eligible denominator. For the sample performance rate calculation in the flow these patients would fall into the 'b' category (denominator exclusion, i.e. 5 patients).

Sample Calculation

Performance Rate Equals

Performance Met is category 'a' in the measure flow (250 patients)

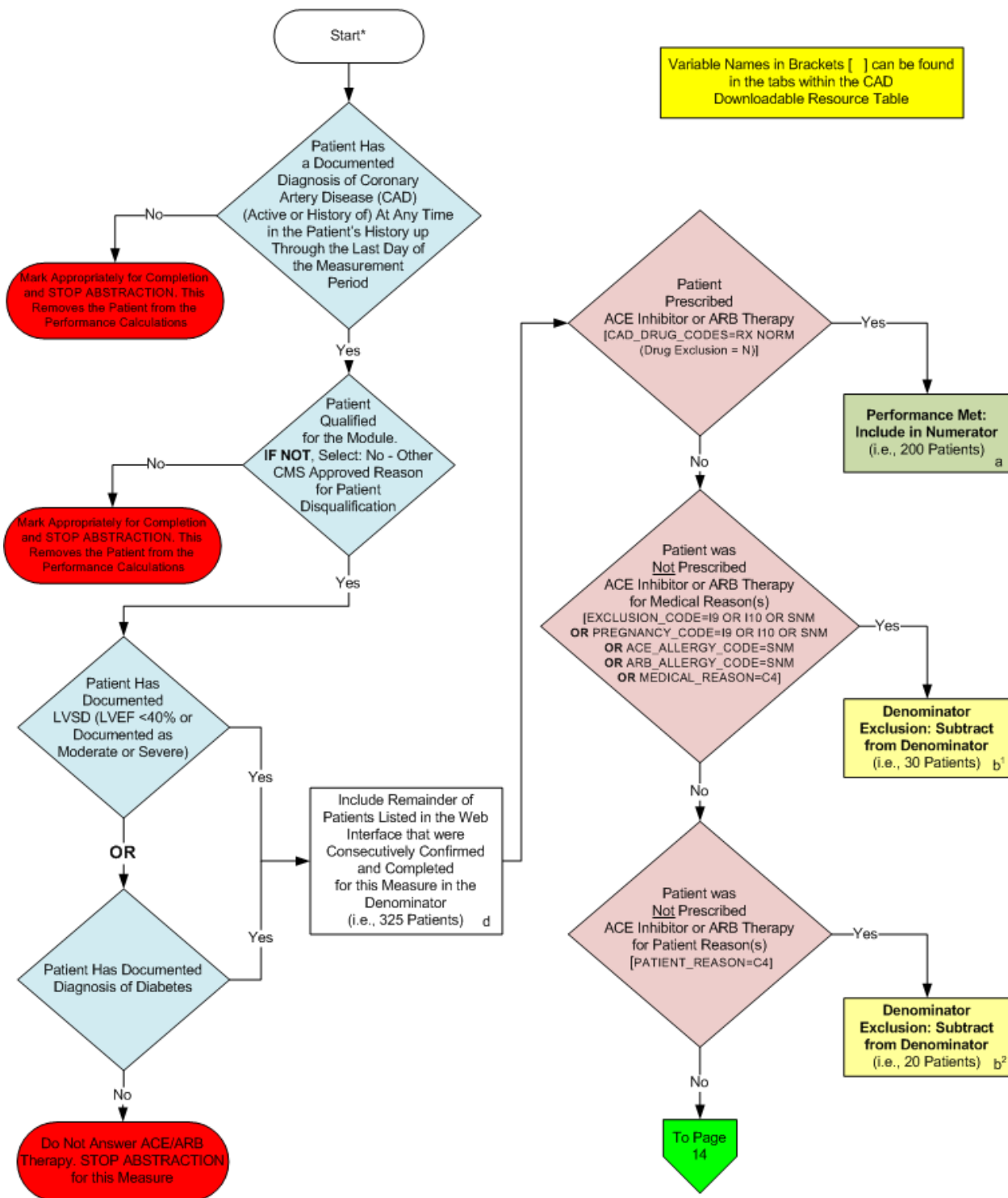
Eligible Denominator is category 'd' in measure flow (350 patients)

Denominator Exclusion is category 'b' in measure flow (60 Patients)

250 (Performance Met) divided by 290 (Eligible Denominator minus Denominator Exclusions) equals a performance rate of 86.21 percent

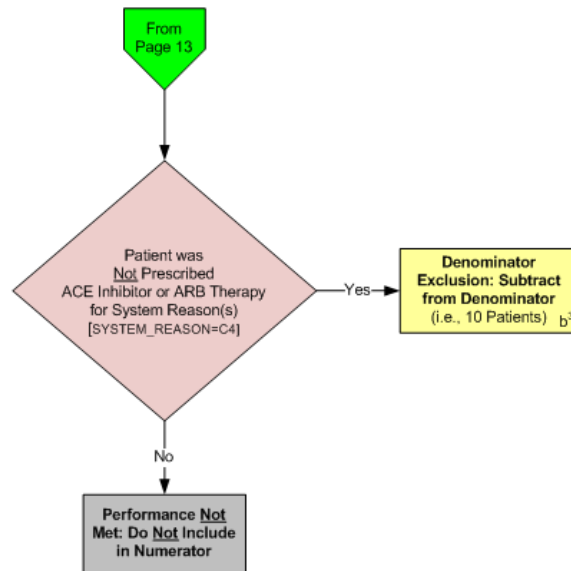
Calculation May Change Pending Performance Met

2013 GPRO-CAD-7 (NQF 0066): Coronary Artery Disease (CAD): Angiotensin-Converting Enzyme (ACE) Inhibitor or Angiotensin Receptor Blocker (ARB) Therapy - Diabetes or Left Ventricular Systolic Dysfunction (LVEF < 40%)
 This flow applies to PQRS GPRO Web Interface and ACO GPRO Web Interface



*See Data Guidance for further instructions to report this measure

2013 GPRO-CAD-7 (NQF 0066): Coronary Artery Disease (CAD): Angiotensin-Converting Enzyme (ACE) Inhibitor or Angiotensin Receptor Blocker (ARB) Therapy - Diabetes or Left Ventricular Systolic Dysfunction (LVEF < 40%)
 This flow applies to PQRS GPRO Web Interface and ACO GPRO Web Interface



SAMPLE CALCULATION:

Performance Rate=
 Performance Met (a = 200 Patients) 200 Patients = 75.47%
 Eligible Denominator (d=325 Patients) - Denominator Exclusion (b=30 + b²=20 + b³=10 Patients) = 265 Patients

CALCULATION MAY CHANGE PENDING PERFORMANCE MET ABOVE

*See Data Guidance for further instructions to report this measure

2013 GPRO-CAD-7 (NQF 0066): Coronary Artery Disease (CAD): Angiotensin-Converting Enzyme (ACE) Inhibitor or Angiotensin Receptor Blocker (ARB) Therapy - Diabetes or Left Ventricular Systolic Dysfunction (LVEF < 40%)

This flow applies to PQRS GPRO Web Interface and ACO GPRO Web Interface

Variable names can be found in the tabs within the CAD Downloadable Resource Table.
See Data Guidance for further instructions to report this measure.

1. Start processing 2013 GPRO-CAD-7 (NQF 0066) Flow for the patients that qualified for sample in the CAD Patient Confirmation Flow.
2. Check to determine if the patient has a documented diagnosis of Coronary Artery Disease (CAD) (active or history of) at any time in the patient's history up through the last day of the measurement period.
 - a. If no, the patient does not have a documented diagnosis of Coronary Artery Disease (CAD) (active or history of) at any time in the patient's history up through the last day of the measurement period, mark appropriately for completion and stop abstraction. This removes the patient from the performance calculations. Stop processing.
 - b. If yes, the patient does have a documented diagnosis of Coronary Artery Disease (CAD) (active or history of) at any time in the patient's history up through the last day of the measurement period, continue processing.
3. Check to determine if the patient qualifies for the module.
 - a. If no, the patient did not qualify for the module select: No – Other CMS Approved Reason for patient disqualification. Mark appropriately for completion and stop abstraction. This removes the patient from the performance calculations. Stop processing.
 - b. If yes, the patient does qualify for the module, continue processing.
4. Check to determine if the patient has documented LVSD (LVEF less than 40 percent or documented as moderate or severe) or has documented diagnosis of diabetes.
 - a. If no, the patient did not have documented LVSD (LVEF less than 40 percent or documented as moderate or severe) or documented diagnosis of diabetes, stop abstraction and do not answer ACE/ARB Therapy for this measure. Stop processing.
 - b. If yes, the patient did have documented LVSD (LVEF less than 40 percent or documented as moderate or severe) or documented diagnosis of diabetes, the patient will be included in the eligible denominator for performance rate calculations. Note: Include remainder of patients listed in the Web Interface that were consecutively confirmed and completed for this measure in the denominator. For the sample performance rate calculation in the flow these patients would fall into the 'd' category (eligible denominator, i.e. 325 patients). Continue processing.
5. Check to determine if the patient was prescribed ACE Inhibitor or ARB Therapy. Variable Names: CAD_DRUG_CODE=RXNORM (drug exclusion=N).
 - a. If no, the patient was not prescribed ACE Inhibitor or ARB Therapy, continue processing.
 - b. If yes, the patient was prescribed ACE Inhibitor or ARB Therapy, performance is met and the patient will be included in the numerator. For the sample performance rate calculation in the flow these patients would fall into the 'a' category (numerator, i.e. 200 patients). Stop processing.

6. Check to determine if the patient was Not prescribed ACE Inhibitor or ARB Therapy for medical reason(s).
Variable Names: EXCLUSION_CODE=I9 OR I10 OR SNM OR PREGNANCY_CODE=I9 OR I10 OR SNM OR ACE_ALLERGY_CODE=SNM OR ARB_ALLERGY_CODE=SNM OR MEDICAL_REASON=C4.
 - a. If no, patient was Not prescribed ACE Inhibitor or ARB Therapy for medical reason(s), continue processing.
 - b. If yes, patient was Not prescribed ACE Inhibitor or ARB Therapy for medical reason(s), this is a denominator exclusion and the case should be subtracted from the eligible denominator. For the sample performance rate calculation in the flow these patients would fall into the 'b' category (denominator exclusion, i.e. 30 patients). Stop processing.

7. Check to determine if the patient was Not prescribed ACE Inhibitor or ARB Therapy for patient reason(s).
Variable Names: PATIENT_REASON=C4.
 - a. If no, patient was Not prescribed ACE Inhibitor or ARB Therapy for patient reason(s), continue processing.
 - b. If yes, patient was Not prescribed ACE Inhibitor or ARB Therapy for patient reason(s), this is a denominator exclusion and the case should be subtracted from the eligible denominator. For the sample performance rate calculation in the flow these patients would fall into the 'b' category (denominator exclusion, i.e. 20 patients). Stop processing.

8. Check to determine if the patient was Not prescribed ACE Inhibitor or ARB Therapy for system reason(s).
Variable Names: SYSTEM_REASON=C4.
 - a. If no, patient was Not prescribed ACE Inhibitor or ARB Therapy for system reason(s), performance is not met and should not be included in the numerator. Stop processing.
 - b. If yes, patient was Not prescribed ACE Inhibitor or ARB Therapy for system reason(s), this is a denominator exclusion and the case should be subtracted from the eligible denominator. For the sample performance rate calculation in the flow these patients would fall into the 'b' category (denominator exclusion, i.e. 10 patients). Stop processing.

Sample Calculation

Performance Rate Equals

Performance Met is category 'a' in the measure flow (200 patients)

Eligible Denominator is category 'd' in measure flow (325 patients)

Denominator Exclusion is category 'b' in measure flow (60 Patients)

200 (Performance Met) divided by 265 (Eligible Denominator minus Denominator Exclusions) equals a performance rate of 75.47 percent

Calculation May Change Pending Performance Met